



CRUSADERS

ACTIVITIES
DIRECTORY

ACADEMIC QUIZ BOWL - High School

TRY-OUTS

The try-outs for academic quiz bowl are usually held as practices. As students practice throughout the school year, top performers are determined in head to head competition.

PRACTICES/MEETINGS

During Lunch Study Halls

COMPETITIONS/GATHERINGS

Springtime during school hours

MANDATORY CAMPS/FUNCTIONS

None

EXPECTED EXPENSES

Camp: None

Uniforms / Attire: None

Warm-Ups: None

Other: None

PARTICIPANTS WILL NEED TO PROVIDE

None

POTENTIAL FUNDRAISING FOR THIS ACTIVITY

None

COACHES / SPONSORS

TBA



All funds raised by your student will be applied directly to his/her school account to offset activity expenses your student incurs. Students are not required to sell anything to make the make, nor participate in any fundraisers for the team. The goal is to help the student offset expenses for this school-sponsored activity.

ACADEMIC QUIZ BOWL - Middle School

TRY-OUTS

The try-outs for academic quiz bowl are usually held as practices. As students practice throughout the school year, top performers are determined in head to head competition.

PRACTICES/MEETINGS

During Lunch Study Halls

COMPETITIONS/GATHERINGS

Springtime during school hours

MANDATORY CAMPS/FUNCTIONS

None

EXPECTED EXPENSES

Camp: None

Uniforms / Attire: None

Warm-Ups: None

Other: None

PARTICIPANTS WILL NEED TO PROVIDE

None

POTENTIAL FUNDRAISING FOR THIS ACTIVITY

None

COACHES / SPONSORS

TBA



All funds raised by your student will be applied directly to his/her school account to offset activity expenses your student incurs. Students are not required to sell anything to make the make, nor participate in any fundraisers for the team. The goal is to help the student offset expenses for this school-sponsored activity.

ART CLUB

TRY-OUTS

None

PRACTICES/MEETINGS

Once a month

COMPETITIONS/GATHERINGS

None

MANDATORY CAMPS/FUNCTIONS

None

EXPECTED EXPENSES

Camp: None

Uniforms / Attire: None

Warm-Ups: None

Other: None

PARTICIPANTS WILL NEED TO PROVIDE

None

POTENTIAL FUNDRAISING FOR THIS ACTIVITY

None

COACHES / SPONSORS

Dawn Zulkoski

dzulkoski@gicc.org



All funds raised by your student will be applied directly to his/her school account to offset activity expenses your student incurs. Students are not required to sell anything to make the make, nor participate in any fundraisers for the team. The goal is to help the student offset expenses for this school-sponsored activity.

BAND - High School Concert Band

TRY-OUTS

None

PRACTICES/MEETINGS

Daily

COMPETITIONS/GATHERINGS

2nd Semester

MANDATORY CAMPS/FUNCTIONS

None

EXPECTED EXPENSES

Camp: None

Uniforms / Attire: \$25 for uniform cleaning, \$50 if renting a school owned instrument

Warm-Ups: None

Other: None

PARTICIPANTS WILL NEED TO PROVIDE

None

POTENTIAL FUNDRAISING FOR THIS ACTIVITY

None

COACHES / SPONSORS

Monika Peters

mpeters@gicc.org



All funds raised by your student will be applied directly to his/her school account to offset activity expenses your student incurs. Students are not required to sell anything to make the make, nor participate in any fundraisers for the team. The goal is to help the student offset expenses for this school-sponsored activity.

BAND - High School Jazz Band

TRY-OUTS

None

PRACTICES/MEETINGS

Weekly, sometimes twice weekly



COMPETITIONS/GATHERINGS

Per the Activities Calendar

MANDATORY CAMPS/FUNCTIONS

None

EXPECTED EXPENSES

Camp: None

Uniforms / Attire: None

Warm-Ups: None

Other: None

PARTICIPANTS WILL NEED TO PROVIDE

Dress Clothes for concerts

POTENTIAL FUNDRAISING FOR THIS ACTIVITY

None

COACHES / SPONSORS

Monika Peters

mpeters@gicc.org

All funds raised by your student will be applied directly to his/her school account to offset activity expenses your student incurs. Students are not required to sell anything to make the make, nor participate in any fundraisers for the team. The goal is to help the student offset expenses for this school-sponsored activity.

BAND - High School Marching Band

TRY-OUTS

None

PRACTICES/MEETINGS

Daily during Band class

COMPETITIONS/GATHERINGS

Fall Parades

MANDATORY CAMPS/FUNCTIONS

None

EXPECTED EXPENSES

Camp: None

Uniforms / Attire: None

Warm-Ups: None

Other: None

PARTICIPANTS WILL NEED TO PROVIDE

Money for meals at the parades.

POTENTIAL FUNDRAISING FOR THIS ACTIVITY

None

COACHES / SPONSORS

Monika Peters

mpeters@gicc.org



All funds raised by your student will be applied directly to his/her school account to offset activity expenses your student incurs. Students are not required to sell anything to make the make, nor participate in any fundraisers for the team. The goal is to help the student offset expenses for this school-sponsored activity.

BAND - High School Pep Band

TRY-OUTS

None

PRACTICES/MEETINGS

Daily during band class



COMPETITIONS/GATHERINGS

Varsity events. The band will usually travel using school vehicles.

MANDATORY CAMPS/FUNCTIONS

None

EXPECTED EXPENSES

Camp: None

Uniforms / Attire: None

Warm-Ups: None

Other: None

PARTICIPANTS WILL NEED TO PROVIDE

Money for food during games, Away-game admission

POTENTIAL FUNDRAISING FOR THIS ACTIVITY

COACHES / SPONSORS

Monika Peters

mpeters@gicc.org

All funds raised by your student will be applied directly to his/her school account to offset activity expenses your student incurs. Students are not required to sell anything to make the make, nor participate in any fundraisers for the team. The goal is to help the student offset expenses for this school-sponsored activity.

BAND - Middle School

TRY-OUTS

None

PRACTICES/MEETINGS

Daily during school

COMPETITIONS/GATHERINGS

Fall, Winter, Spring Concerts

MANDATORY CAMPS/FUNCTIONS

None

EXPECTED EXPENSES

Camp: None

Uniforms / Attire: None

Warm-Ups: None

Other: \$50 if renting a school owned instrument

PARTICIPANTS WILL NEED TO PROVIDE

Black pants, White tops for concert attire

POTENTIAL FUNDRAISING FOR THIS ACTIVITY

None

COACHES / SPONSORS

Monika Peters

mpeters@gicc.org



All funds raised by your student will be applied directly to his/her school account to offset activity expenses your student incurs. Students are not required to sell anything to make the make, nor participate in any fundraisers for the team. The goal is to help the student offset expenses for this school-sponsored activity.

BASKETBALL - High School Boys

TRY-OUTS

First 3 days of practice

PRACTICES/MEETINGS

After School

COMPETITIONS/GATHERINGS

Winter sports season

MANDATORY CAMPS/FUNCTIONS

June 1 - 3rd, 1pm - 3pm

EXPECTED EXPENSES

Camp: \$40

Uniforms / Attire: None

Warm-Ups: None

Other: Shoes. Approximately \$100

PARTICIPANTS WILL NEED TO PROVIDE

shoes (required) ankle braces (optional)

POTENTIAL FUNDRAISING FOR THIS ACTIVITY

Product Based Fundraiser (October/November)

COACHES / SPONSORS

Tino Martinez

tinorm24@gmail.com



All funds raised by your student will be applied directly to his/her school account to offset activity expenses your student incurs. Students are not required to sell anything to make the make, nor participate in any fundraisers for the team. The goal is to help the student offset expenses for this school-sponsored activity.

BASKETBALL - High School Girls

TRY-OUTS

PRACTICES/MEETINGS

After School

COMPETITIONS/GATHERINGS

Various nights of the week

MANDATORY CAMPS/FUNCTIONS

weights and open gym M-F 9:00 to 11:00, summer league at GISH monday evenings TBA
Cross County Varsity June 10, Centennial JV June 21

EXPECTED EXPENSES

Camp: \$60
Uniforms / Attire: None
Warm-Ups: None
Other:None

PARTICIPANTS WILL NEED TO PROVIDE

Basketball Shoes

POTENTIAL FUNDRAISING FOR THIS ACTIVITY

Peach Sales over the summer

COACHES / SPONSORS

Kevin Mayfield
kmayfield@gicc.org



All funds raised by your student will be applied directly to his/her school account to offset activity expenses your student incurs. Students are not required to sell anything to make the make, nor participate in any fundraisers for the team. The goal is to help the student offset expenses for this school-sponsored activity.

BASKETBALL - Middle School Boys

TRY-OUTS

PRACTICES/MEETINGS

After School

COMPETITIONS/GATHERINGS

Late afternoons/early evenings

MANDATORY CAMPS/FUNCTIONS

None

EXPECTED EXPENSES

Camp: \$0

Uniforms / Attire: None

Warm-Ups: None

Other: None

PARTICIPANTS WILL NEED TO PROVIDE

Basketball Shoes

POTENTIAL FUNDRAISING FOR THIS ACTIVITY

None

COACHES / SPONSORS

Brady Brokaw

bbrokaw@gicc.org



All funds raised by your student will be applied directly to his/her school account to offset activity expenses your student incurs. Students are not required to sell anything to make the make, nor participate in any fundraisers for the team. The goal is to help the student offset expenses for this school-sponsored activity.

BASKETBALL - Middle School Girls

TRY-OUTS

None

PRACTICES/MEETINGS

After School

COMPETITIONS/GATHERINGS

Late afternoons/early evenings

MANDATORY CAMPS/FUNCTIONS

None

EXPECTED EXPENSES

Camp: None

Uniforms / Attire: None

Warm-Ups: None

Other: None

PARTICIPANTS WILL NEED TO PROVIDE

Basketball Shoes

POTENTIAL FUNDRAISING FOR THIS ACTIVITY

None

COACHES / SPONSORS

Ryan Smith

rsmith@gicc.org



All funds raised by your student will be applied directly to his/her school account to offset activity expenses your student incurs. Students are not required to sell anything to make the make, nor participate in any fundraisers for the team. The goal is to help the student offset expenses for this school-sponsored activity.

BIG/LITTLE CRUSADERS

TRY-OUTS

None

PRACTICES/MEETINGS

None



COMPETITIONS/GATHERINGS

Seasonally through the school year

MANDATORY CAMPS/FUNCTIONS

None

EXPECTED EXPENSES

Camp: None

Uniforms / Attire: None

Warm-Ups: None

Other: None



PARTICIPANTS WILL NEED TO PROVIDE

Holiday gift for their assigned Big/Little

POTENTIAL FUNDRAISING FOR THIS ACTIVITY

None

COACHES / SPONSORS

Jordan Engle

jengle@gicc.org

All funds raised by your student will be applied directly to his/her school account to offset activity expenses your student incurs. Students are not required to sell anything to make the make, nor participate in any fundraisers for the team. The goal is to help the student offset expenses for this school-sponsored activity.

CHEERLEADING

TRY-OUTS

April 24, 1-4PM

PRACTICES/MEETINGS

M W 6-7:30AM Some F 6-7:30AM

COMPETITIONS/GATHERINGS

Home FB, VB, BB games. Some away games.

MANDATORY CAMPS/FUNCTIONS

EXPECTED EXPENSES \$750 Total

Camp: Included

Uniforms / Attire: Included

Warm-Ups:

Other:

PARTICIPANTS WILL NEED TO PROVIDE

None

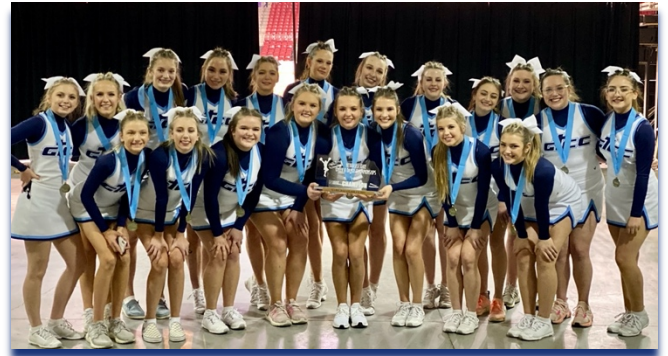
POTENTIAL FUNDRAISING FOR THIS ACTIVITY

Popcorn Sales

COACHES / SPONSORS

Makenzie Mudloff

mdunham@gicc.org



All funds raised by your student will be applied directly to his/her school account to offset activity expenses your student incurs. Students are not required to sell anything to make the make, nor participate in any fundraisers for the team. The goal is to help the student offset expenses for this school-sponsored activity.

CHOIR - Concert

TRY-OUTS

None

PRACTICES/MEETINGS

School Day

COMPETITIONS/GATHERINGS

Late April (district music contest)

MANDATORY CAMPS/FUNCTIONS

N/A

EXPECTED EXPENSES

Camp: None

Uniforms / Attire: None

Warm-Ups: None

Other: None

PARTICIPANTS WILL NEED TO PROVIDE

Dress Clothes for concerts

POTENTIAL FUNDRAISING FOR THIS ACTIVITY

None

COACHES / SPONSORS

Tyler Koepp

tkoepp@gicc.org



All funds raised by your student will be applied directly to his/her school account to offset activity expenses your student incurs. Students are not required to sell anything to make the make, nor participate in any fundraisers for the team. The goal is to help the student offset expenses for this school-sponsored activity.

CHOIR - High School Show Choir

TRY-OUTS

Late summer/early fall

PRACTICES/MEETINGS

6:30 - 8:00 AM

COMPETITIONS/GATHERINGS

Springtime

MANDATORY CAMPS/FUNCTIONS

Team choreography and try outs late in the summer

EXPECTED EXPENSES

Camp: Depends on cost of choreography

Uniforms / Attire: Approximately \$250

Warm-Ups: None

Other: None

PARTICIPANTS WILL NEED TO PROVIDE

None

POTENTIAL FUNDRAISING FOR THIS ACTIVITY

None

COACHES / SPONSORS

Tyler Koepp

tkoepp@gicc.org



All funds raised by your student will be applied directly to his/her school account to offset activity expenses your student incurs. Students are not required to sell anything to make the make, nor participate in any fundraisers for the team. The goal is to help the student offset expenses for this school-sponsored activity.

CHOIR - Middle School

TRY-OUTS

None

PRACTICES/MEETINGS

School Day

COMPETITIONS/GATHERINGS

April (Malcolm Music Contest)

MANDATORY CAMPS/FUNCTIONS

No

EXPECTED EXPENSES

Camp: None

Uniforms / Attire: None

Warm-Ups: None

Other: None

PARTICIPANTS WILL NEED TO PROVIDE

Dress Clothes for Concerts

POTENTIAL FUNDRAISING FOR THIS ACTIVITY

None

COACHES / SPONSORS

Tyler Koepp

tkoepp@gicc.org



All funds raised by your student will be applied directly to his/her school account to offset activity expenses your student incurs. Students are not required to sell anything to make the make, nor participate in any fundraisers for the team. The goal is to help the student offset expenses for this school-sponsored activity.

CHOIR - Middle School Show Choir

TRY-OUTS

Early in the school year on an agreed upon Saturday that works for participants

PRACTICES/MEETINGS

Before school usually three times per week

COMPETITIONS/GATHERINGS

Springtime during school hours

MANDATORY CAMPS/FUNCTIONS

No

EXPECTED EXPENSES

Camp: None

Uniforms / Attire: Approximately \$100

Warm-Ups: None

Other: None

PARTICIPANTS WILL NEED TO PROVIDE

None

POTENTIAL FUNDRAISING FOR THIS ACTIVITY

None

COACHES / SPONSORS

Monika Peters

mpeters@gicc.org



All funds raised by your student will be applied directly to his/her school account to offset activity expenses your student incurs. Students are not required to sell anything to make the make, nor participate in any fundraisers for the team. The goal is to help the student offset expenses for this school-sponsored activity.

CROSS COUNTRY - High & Middle Schools

TRY-OUTS

None

PRACTICES/MEETINGS

After school

COMPETITIONS/GATHERINGS

Fall sports months (August - October)

MANDATORY CAMPS/FUNCTIONS

No, but running during the summer is encouraged to stay in shape.

EXPECTED EXPENSES

Camp: None

Uniforms / Attire: None

Warm-Ups: None

Other: None

PARTICIPANTS WILL NEED TO PROVIDE

Running Shoes

POTENTIAL FUNDRAISING FOR THIS ACTIVITY

None

COACHES / SPONSORS

Phou Manivong

pmanivong@gicc.org



All funds raised by your student will be applied directly to his/her school account to offset activity expenses your student incurs. Students are not required to sell anything to make the make, nor participate in any fundraisers for the team. The goal is to help the student offset expenses for this school-sponsored activity.

DANCE - High School

TRY-OUTS

Thursday, April 15 @ 4pm

PRACTICES/MEETINGS

Typically Tuesday and Thursday mornings, 6-7:30am
Some Fridays as needed as we get close to state

COMPETITIONS/GATHERINGS

Third week in February

MANDATORY CAMPS/FUNCTIONS

July 22-25 in Lincoln....haven't received the times yet.

EXPECTED EXPENSES

Camp: Approx \$450

Uniforms / Attire: Between \$450 & \$900

Warm-Ups: None

Other: Approximately \$125 for camp attire

PARTICIPANTS WILL NEED TO PROVIDE

None

POTENTIAL FUNDRAISING FOR THIS ACTIVITY

Bug butter and other items (self tanner, toothpaste, etc) - late April and May

Car wash - June or July

Grub Grill - home varsity football games; we also plan on doing popcorn again with the cheer team in October

COACHES / SPONSORS

Erin E Martinez

emartinez311@gmail.com



All funds raised by your student will be applied directly to his/her school account to offset activity expenses your student incurs. Students are not required to sell anything to make the make, nor participate in any fundraisers for the team. The goal is to help the student offset expenses for this school-sponsored activity.

DANCE - Middle School

TRY-OUTS

Sometime in April

PRACTICES/MEETINGS

Monday and Wednesday, 6-7:30am. Additional practices may be scheduled as needed before a performance.

COMPETITIONS/GATHERINGS

Exhibition opportunities are Aug 14 at GISH, January at GICC, and February at GISH

MANDATORY CAMPS/FUNCTIONS

UDA home camp at GICC June 21 (noon-6:30pm) and June 22 (9am-4:30pm)

EXPECTED EXPENSES

Camp: Approx \$200

Uniforms / Attire: Approx \$500

Warm-Ups: None

Other: None

PARTICIPANTS WILL NEED TO PROVIDE

Jazz Shoes

POTENTIAL FUNDRAISING FOR THIS ACTIVITY

Bug butter and other items (self tanner, toothpaste, etc) - late April and May

Popcorn - June

COACHES / SPONSORS

Erin Martinez

giccdanceteam@gmail.com



All funds raised by your student will be applied directly to his/her school account to offset activity expenses your student incurs. Students are not required to sell anything to make the make, nor participate in any fundraisers for the team. The goal is to help the student offset expenses for this school-sponsored activity.

FBLA – Future Business Leaders of America

TRY-OUTS

The Leadership Team was selected during the last two weeks of the 2020-2021 school year.

PRACTICES/MEETINGS

Monthly meetings on the 3rd Sunday of each month during the school year.



COMPETITIONS/GATHERINGS

We participate in various business competitions throughout the year, including the Fall Leadership Conference and State Leadership Conference.

MANDATORY CAMPS/FUNCTIONS

None

EXPECTED EXPENSES

Camp: None

Uniforms / Attire: \$12 Tshirt

Warm-Ups: None

Other: \$8 National Dues

PARTICIPANTS WILL NEED TO PROVIDE

None

POTENTIAL FUNDRAISING FOR THIS ACTIVITY

None

COACHES / SPONSORS

Phou Manivong

pmanivong@gicc.org

All funds raised by your student will be applied directly to his/her school account to offset activity expenses your student incurs. Students are not required to sell anything to make the make, nor participate in any fundraisers for the team. The goal is to help the student offset expenses for this school-sponsored activity.

FOOTBALL - High School

TRY-OUTS

None

PRACTICES/MEETINGS

Monday thru Thursday - 4:00-7:00pm (time decreases as season progresses)

Saturday 8:00-9:30am (times vary)



COMPETITIONS/GATHERINGS

VARSITY: Friday Nights beginning 8/27 JV: Mon./Tues. Evenings beginning 8/31

MANDATORY CAMPS/FUNCTIONS

June 15-17-18-29, July 1-2 5:00-8:00pm each session Non-Mandatory but HIGHLY RECOMMENDED

EXPECTED EXPENSES

Camp: \$40 (Includes Team Shorts)

Uniforms / Attire: None

Warm-Ups: None

Other: \$50 Participation Fee for Equipment

PARTICIPANTS WILL NEED TO PROVIDE

Football Cleats, Mouth Pieces

POTENTIAL FUNDRAISING FOR THIS ACTIVITY

Fall 2021 and/or Spring 2022 to off-set participation fee

COACHES / SPONSORS

Timothy Dvorak

tdvorak@gicc.org

All funds raised by your student will be applied directly to his/her school account to offset activity expenses your student incurs. Students are not required to sell anything to make the make, nor participate in any fundraisers for the team. The goal is to help the student offset expenses for this school-sponsored activity.

FOOTBALL - Middle School

TRY-OUTS

None

PRACTICES/MEETINGS

3:45-6:00pm in the Fall

COMPETITIONS/GATHERINGS

Weekday's in the Fall. Activities Calendar has schedule.

MANDATORY CAMPS/FUNCTIONS

Non-Mandatory but Highly Recommended. Cost is \$40. Funds collected provide "Team Shorts" for those who pay and participate in camp (approx \$20).

EXPECTED EXPENSES

Camp: Non-Mandatory but highly recommended, \$40

Uniforms / Attire: None

Warm-Ups: None

Other: None

PARTICIPANTS WILL NEED TO PROVIDE

Athletes provide own cleats & mouthpieces

POTENTIAL FUNDRAISING FOR THIS ACTIVITY

None

COACHES / SPONSORS

Timothy D. Dvorak

tdvorak@gicc.org



All funds raised by your student will be applied directly to his/her school account to offset activity expenses your student incurs. Students are not required to sell anything to make the make, nor participate in any fundraisers for the team. The goal is to help the student offset expenses for this school-sponsored activity.

GOLF - Boys

TRY-OUTS

None

PRACTICES/MEETINGS

After school hours during the spring sports season

COMPETITIONS/GATHERINGS

During school days and Saturdays late March - May

MANDATORY CAMPS/FUNCTIONS

None

EXPECTED EXPENSES

Camp: None

Uniforms / Attire: \$150

Warm-Ups: None

Other: None

PARTICIPANTS WILL NEED TO PROVIDE

Golf Clubs, balls, shoes, and equipment

POTENTIAL FUNDRAISING FOR THIS ACTIVITY

None

COACHES / SPONSORS

Craig Rupp

rupper1017@gmail.com



All funds raised by your student will be applied directly to his/her school account to offset activity expenses your student incurs. Students are not required to sell anything to make the make, nor participate in any fundraisers for the team. The goal is to help the student offset expenses for this school-sponsored activity.

GOLF - Girls

TRY-OUTS

None

PRACTICES/MEETINGS

After School in the Fall at Indian Head Golf Course 3:45 - 5:15

COMPETITIONS/GATHERINGS

From Aug. to Oct.

MANDATORY CAMPS/FUNCTIONS

EXPECTED EXPENSES

Camp: None

Uniforms / Attire: Approximately \$100

Warm-Ups: None

Other: None

PARTICIPANTS WILL NEED TO PROVIDE

None

POTENTIAL FUNDRAISING FOR THIS ACTIVITY

None

COACHES / SPONSORS

Dee Hanssen

dhanssen@gicc.org



All funds raised by your student will be applied directly to his/her school account to offset activity expenses your student incurs. Students are not required to sell anything to make the make, nor participate in any fundraisers for the team. The goal is to help the student offset expenses for this school-sponsored activity.

JOURNALISM - High School

TRY-OUTS

None

PRACTICES/MEETINGS

None

COMPETITIONS/GATHERINGS

Throughout the year, and State in April

MANDATORY CAMPS/FUNCTIONS

7/12-7/14 all day

EXPECTED EXPENSES

Camp: \$325

Uniforms / Attire: \$25 Tshirt

Warm-Ups: None

Other: None

PARTICIPANTS WILL NEED TO PROVIDE

None

POTENTIAL FUNDRAISING FOR THIS ACTIVITY

Ad Sales in summer/fall

COACHES / SPONSORS

barb yager-wach

byager@gicc.org



All funds raised by your student will be applied directly to his/her school account to offset activity expenses your student incurs. Students are not required to sell anything to make the make, nor participate in any fundraisers for the team. The goal is to help the student offset expenses for this school-sponsored activity.

MATH BOWL - High School

TRY-OUTS

No, but top performers are identified during practices

PRACTICES/MEETINGS

During Lunch Study Halls

COMPETITIONS/GATHERINGS

November - UNL Math Day

MANDATORY CAMPS/FUNCTIONS

EXPECTED EXPENSES

Camp: None

Uniforms / Attire: None

Warm-Ups: None

Other: None

PARTICIPANTS WILL NEED TO PROVIDE

None

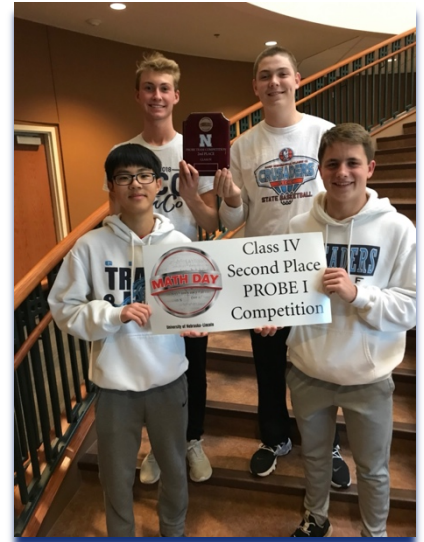
POTENTIAL FUNDRAISING FOR THIS ACTIVITY

None

COACHES / SPONSORS

Marilyn Luther

mluther@gicc.org



All funds raised by your student will be applied directly to his/her school account to offset activity expenses your student incurs. Students are not required to sell anything to make the make, nor participate in any fundraisers for the team. The goal is to help the student offset expenses for this school-sponsored activity.

MATH BOWL - Middle School

TRY-OUTS

No, but top performers are identified during practices

PRACTICES/MEETINGS

During Lunch Study Halls

COMPETITIONS/GATHERINGS

Mathcounts competitions typically take place in February



MANDATORY CAMPS/FUNCTIONS

None

EXPECTED EXPENSES

Camp: None

Uniforms / Attire: None

Warm-Ups: None

Other: None

PARTICIPANTS WILL NEED TO PROVIDE

None

POTENTIAL FUNDRAISING FOR THIS ACTIVITY

None

COACHES / SPONSORS

Jordan Engle

jengle@gicc.org

All funds raised by your student will be applied directly to his/her school account to offset activity expenses your student incurs. Students are not required to sell anything to make the make, nor participate in any fundraisers for the team. The goal is to help the student offset expenses for this school-sponsored activity.

MUSICAL

TRY-OUTS

January

PRACTICES/MEETINGS

Evenings January-March

COMPETITIONS/GATHERINGS

Spring Performances

MANDATORY CAMPS/FUNCTIONS

Rehearsals

EXPECTED EXPENSES

Camp: None

Uniforms / Attire:

Warm-Ups: None

Other: None

PARTICIPANTS WILL NEED TO PROVIDE

None

POTENTIAL FUNDRAISING FOR THIS ACTIVITY

None

COACHES / SPONSORS

Tyler Koepp

tkoepp@gicc.org



All funds raised by your student will be applied directly to his/her school account to offset activity expenses your student incurs. Students are not required to sell anything to make the make, nor participate in any fundraisers for the team. The goal is to help the student offset expenses for this school-sponsored activity.

NATIONAL HONOR SOCIETY

TRY-OUTS

Applications are due in the Fall

PRACTICES/MEETINGS

COMPETITIONS/GATHERINGS

MANDATORY CAMPS/FUNCTIONS

EXPECTED EXPENSES

Camp: None

Uniforms / Attire: None

Warm-Ups: None

Other: None

PARTICIPANTS WILL NEED TO PROVIDE

Dress clothes for induction ceremony

POTENTIAL FUNDRAISING FOR THIS ACTIVITY

None

COACHES / SPONSORS

TBA

TBA



All funds raised by your student will be applied directly to his/her school account to offset activity expenses your student incurs. Students are not required to sell anything to make the make, nor participate in any fundraisers for the team. The goal is to help the student offset expenses for this school-sponsored activity.

ONE ACT PLAY

TRY-OUTS

September

PRACTICES/MEETINGS

Evenings September - December

COMPETITIONS/GATHERINGS

Conference, Districts

MANDATORY CAMPS/FUNCTIONS

None

EXPECTED EXPENSES

Camp: None

Uniforms / Attire: Approximately \$20

Warm-Ups: None

Other: None

PARTICIPANTS WILL NEED TO PROVIDE

None

POTENTIAL FUNDRAISING FOR THIS ACTIVITY

None

COACHES / SPONSORS

Dave Hulinsky

dave@completehighplains.com



All funds raised by your student will be applied directly to his/her school account to offset activity expenses your student incurs. Students are not required to sell anything to make the make, nor participate in any fundraisers for the team. The goal is to help the student offset expenses for this school-sponsored activity.

SOCCER - High School

TRY-OUTS

March 1st

PRACTICES/MEETINGS

Everyday

COMPETITIONS/GATHERINGS

Weekdays and occasional Saturdays

MANDATORY CAMPS/FUNCTIONS

Not mandatory but typically in June

EXPECTED EXPENSES

Camp: Typically \$25

Uniforms / Attire: None

Warm-Ups: None

Other: None

PARTICIPANTS WILL NEED TO PROVIDE

Ball, shoes, shinguards and water bottle

POTENTIAL FUNDRAISING FOR THIS ACTIVITY

Pizza coupons

COACHES / SPONSORS

John Kenna

jkenna76@msn.com



All funds raised by your student will be applied directly to his/her school account to offset activity expenses your student incurs. Students are not required to sell anything to make the make, nor participate in any fundraisers for the team. The goal is to help the student offset expenses for this school-sponsored activity.

SOCCER - Middle School

TRY-OUTS

Early march

PRACTICES/MEETINGS

Daily after school

COMPETITIONS/GATHERINGS

Weekdays after school

MANDATORY CAMPS/FUNCTIONS

None

EXPECTED EXPENSES

Camp: None

Uniforms / Attire: None

Warm-Ups: None

Other: None

PARTICIPANTS WILL NEED TO PROVIDE

Shoes, Shin guards

POTENTIAL FUNDRAISING FOR THIS ACTIVITY

None

COACHES / SPONSORS

Paul Watson

John Kenna jkenna76@msn.com



All funds raised by your student will be applied directly to his/her school account to offset activity expenses your student incurs. Students are not required to sell anything to make the make, nor participate in any fundraisers for the team. The goal is to help the student offset expenses for this school-sponsored activity.

SOFTBALL

TRY-OUTS

None

PRACTICES/MEETINGS

M-F beginning the first of August

COMPETITIONS/GATHERINGS

Usually Tuesdays, Thursdays and Saturdays

MANDATORY CAMPS/FUNCTIONS

Millard South Camp (6/8 and 6/9), GISH Camp (7/5 and 7/6)

EXPECTED EXPENSES

Camp: Millard South (\$600), GISH (\$50/player)

Uniforms / Attire: None

Warm-Ups: None

Other: None

PARTICIPANTS WILL NEED TO PROVIDE

Pants, socks, helmet, bat bag, glove, cleats, bat

POTENTIAL FUNDRAISING FOR THIS ACTIVITY

Crusader Softball Camp (May 3-5) 6:30-8:30 for grades 5-8.

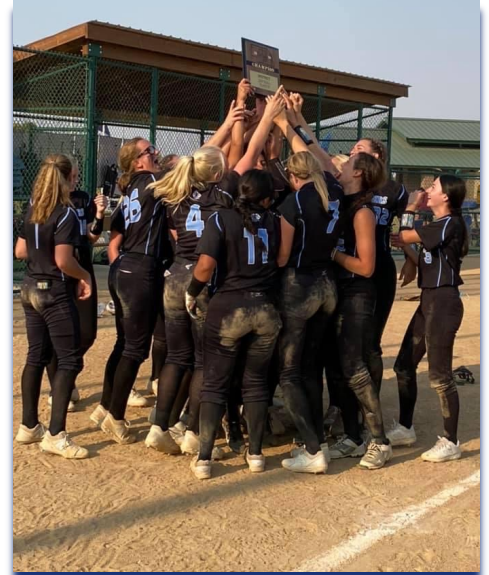
Mid Nebraska Youth Softball Clinic/ June 8&9 (9am to 2pm)

Garage Sale/Car Wash/BBQ

COACHES / SPONSORS

Brock Culler

culler6@charter.net



All funds raised by your student will be applied directly to his/her school account to offset activity expenses your student incurs. Students are not required to sell anything to make the make, nor participate in any fundraisers for the team. The goal is to help the student offset expenses for this school-sponsored activity.

SPEECH – High School

TRY-OUTS

None

PRACTICES/MEETINGS

Practices scheduled per student availability

COMPETITIONS/GATHERINGS

January - March

MANDATORY CAMPS/FUNCTIONS

None

EXPECTED EXPENSES

Camp: None

Uniforms / Attire: None

Warm-Ups: None

Other: None

PARTICIPANTS WILL NEED TO PROVIDE

Dress Clothes for competitions

POTENTIAL FUNDRAISING FOR THIS ACTIVITY

None

COACHES / SPONSORS

Jordan Engle

jengle@gicc.org



All funds raised by your student will be applied directly to his/her school account to offset activity expenses your student incurs. Students are not required to sell anything to make the make, nor participate in any fundraisers for the team. The goal is to help the student offset expenses for this school-sponsored activity.

STUDENT COUNCIL - High School

TRY-OUTS

None

PRACTICES/MEETINGS

Monthly

COMPETITIONS/GATHERINGS

None

MANDATORY CAMPS/FUNCTIONS

None

EXPECTED EXPENSES

Camp: None

Uniforms / Attire: \$12-\$15 Tshirt

Warm-Ups: None

Other: None

PARTICIPANTS WILL NEED TO PROVIDE

None

POTENTIAL FUNDRAISING FOR THIS ACTIVITY

TBD

COACHES / SPONSORS

Jennifer Koralewski

jkoralewski@gicc.org



All funds raised by your student will be applied directly to his/her school account to offset activity expenses your student incurs. Students are not required to sell anything to make the make, nor participate in any fundraisers for the team. The goal is to help the student offset expenses for this school-sponsored activity.

STUDENT COUNCIL - Middle School

TRY-OUTS

Elected in the spring of the previous year

PRACTICES/MEETINGS

Schoolyear

COMPETITIONS/GATHERINGS

Elections are held the previous spring

MANDATORY CAMPS/FUNCTIONS

None

EXPECTED EXPENSES

Camp: None

Uniforms / Attire: \$15 Tshirt

Warm-Ups: None

Other: None

PARTICIPANTS WILL NEED TO PROVIDE

None

POTENTIAL FUNDRAISING FOR THIS ACTIVITY

None

COACHES / SPONSORS

Dawn Zulkoski

dzulkoski@aim.com



All funds raised by your student will be applied directly to his/her school account to offset activity expenses your student incurs. Students are not required to sell anything to make the make, nor participate in any fundraisers for the team. The goal is to help the student offset expenses for this school-sponsored activity.

TENNIS – High School Boys

TRY-OUTS

None

PRACTICES/MEETINGS

After School

COMPETITIONS/GATHERINGS

During weekdays and weekends



MANDATORY CAMPS/FUNCTIONS

None

EXPECTED EXPENSES

Camp: None

Uniforms / Attire: Team Shirt

Warm-Ups: None

Other: None

PARTICIPANTS WILL NEED TO PROVIDE

Tennis Raquet & Shoes

POTENTIAL FUNDRAISING FOR THIS ACTIVITY

None

COACHES / SPONSORS

James Lowry

jlowry@gicc.org

All funds raised by your student will be applied directly to his/her school account to offset activity expenses your student incurs. Students are not required to sell anything to make the make, nor participate in any fundraisers for the team. The goal is to help the student offset expenses for this school-sponsored activity.

TENNIS – High School Girls

TRY-OUTS

None

PRACTICES/MEETINGS

After school

COMPETITIONS/GATHERINGS

During weekdays and some weekends

MANDATORY CAMPS/FUNCTIONS

None

EXPECTED EXPENSES

Camp: None

Uniforms / Attire: Team Shirt

Warm-Ups: None

Other: None

PARTICIPANTS WILL NEED TO PROVIDE

Tennis Raquet & Shoes

POTENTIAL FUNDRAISING FOR THIS ACTIVITY

None

COACHES / SPONSORS

James Lowry

jlowry@gicc.org



All funds raised by your student will be applied directly to his/her school account to offset activity expenses your student incurs. Students are not required to sell anything to make the make, nor participate in any fundraisers for the team. The goal is to help the student offset expenses for this school-sponsored activity.

TRACK & FIELD - High School

TRY-OUTS

None

PRACTICES/MEETINGS

After school

COMPETITIONS/GATHERINGS

Various days, Monday-Saturday

MANDATORY CAMPS/FUNCTIONS

None

EXPECTED EXPENSES

Camp: None

Uniforms / Attire: None

Warm-Ups: None

Other: None

PARTICIPANTS WILL NEED TO PROVIDE

Track shoes

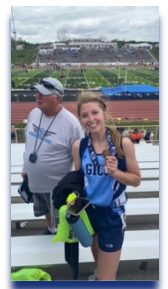
POTENTIAL FUNDRAISING FOR THIS ACTIVITY

None

COACHES / SPONSORS

Keith Kester

kkester@gicc.org



All funds raised by your student will be applied directly to his/her school account to offset activity expenses your student incurs. Students are not required to sell anything to make the make, nor participate in any fundraisers for the team. The goal is to help the student offset expenses for this school-sponsored activity.

TRACK & FIELD - Middle School

TRY-OUTS

None

PRACTICES/MEETINGS

3:45 to 5:30 Monday through Friday

COMPETITIONS/GATHERINGS

March 29 - May 4

MANDATORY CAMPS/FUNCTIONS

None

EXPECTED EXPENSES

Camp: None

Uniforms / Attire: \$8.00 shirt

Warm-Ups: None

Other: None

PARTICIPANTS WILL NEED TO PROVIDE

Black shorts, Running shoes, Spikes are optional

POTENTIAL FUNDRAISING FOR THIS ACTIVITY

None

COACHES / SPONSORS

Dawnell Glunz

dglunz@gicc.org



All funds raised by your student will be applied directly to his/her school account to offset activity expenses your student incurs. Students are not required to sell anything to make the make, nor participate in any fundraisers for the team. The goal is to help the student offset expenses for this school-sponsored activity.

TRAP SHOOTING- High & Middle School

TRY-OUTS

None

PRACTICES/MEETINGS

Evenings & Weekends



COMPETITIONS/GATHERINGS

TBA

MANDATORY CAMPS/FUNCTIONS

None

EXPECTED EXPENSES

Camp: None

Uniforms / Attire:

Warm-Ups: None

Other: None

PARTICIPANTS WILL NEED TO PROVIDE

Firearm

POTENTIAL FUNDRAISING FOR THIS ACTIVITY

None

COACHES / SPONSORS

TBA

All funds raised by your student will be applied directly to his/her school account to offset activity expenses your student incurs. Students are not required to sell anything to make the make, nor participate in any fundraisers for the team. The goal is to help the student offset expenses for this school-sponsored activity.

VOLLEYBALL - High School

TRY-OUTS

First week of practice (August)

PRACTICES/MEETINGS

After School

COMPETITIONS/GATHERINGS

Late August through early November

MANDATORY CAMPS/FUNCTIONS

None

EXPECTED EXPENSES

Camp: None

Uniforms / Attire: None

Warm-Ups: None

Other: None

PARTICIPANTS WILL NEED TO PROVIDE

Spandex shorts , Shoes

POTENTIAL FUNDRAISING FOR THIS ACTIVITY

business advertising for T shirts for camp participants

COACHES / SPONSORS

Sharon Zavala

szavala@gicc.org



All funds raised by your student will be applied directly to his/her school account to offset activity expenses your student incurs. Students are not required to sell anything to make the make, nor participate in any fundraisers for the team. The goal is to help the student offset expenses for this school-sponsored activity.

VOLLEYBALL - Middle School

TRY-OUTS

None

PRACTICES/MEETINGS

After school

COMPETITIONS/GATHERINGS

None

MANDATORY CAMPS/FUNCTIONS

None

EXPECTED EXPENSES

Camp: None

Uniforms / Attire: None

Warm-Ups: \$16.50 shirt

Other: None

PARTICIPANTS WILL NEED TO PROVIDE

Knee Pads, Navy Blue Volleyball Shorts, Shoes

POTENTIAL FUNDRAISING FOR THIS ACTIVITY

None

COACHES / SPONSORS

Janelle Armstrong jarmstrong@gicc.org

Kelley Ward kward@gicc.org



All funds raised by your student will be applied directly to his/her school account to offset activity expenses your student incurs. Students are not required to sell anything to make the make, nor participate in any fundraisers for the team. The goal is to help the student offset expenses for this school-sponsored activity.

WRESTLING - High School

TRY-OUTS

None

PRACTICES/MEETINGS

Monday through Friday

COMPETITIONS/GATHERINGS

Mostly Saturdays, Some Fridays, Thursdays, and Occasional Tuesday

MANDATORY CAMPS/FUNCTIONS

June 21-25 UNL Camp, Mondays from June to July York League,

EXPECTED EXPENSES

Camp: Not Mandatory: York League and UNL

Uniforms / Attire: None

Warm-Ups: None

Other: I have a team packet and people can buy stuff if they want

PARTICIPANTS WILL NEED TO PROVIDE

I have a team packet and people can buy merchandise if they want

POTENTIAL FUNDRAISING FOR THIS ACTIVITY

None

COACHES / SPONSORS

Zach Schroder

zschrode@gmail.com



All funds raised by your student will be applied directly to his/her school account to offset activity expenses your student incurs. Students are not required to sell anything to make the make, nor participate in any fundraisers for the team. The goal is to help the student offset expenses for this school-sponsored activity.

WRESTLING - Middle School

TRY-OUTS

None

PRACTICES/MEETINGS

After school November - February

COMPETITIONS/GATHERINGS

As per the Activities Calendar

MANDATORY CAMPS/FUNCTIONS

None

EXPECTED EXPENSES

Camp: None

Uniforms / Attire: None

Warm-Ups: None

Other: None

PARTICIPANTS WILL NEED TO PROVIDE

Wrestling Shoes (Approximately \$50)

POTENTIAL FUNDRAISING FOR THIS ACTIVITY

None

COACHES / SPONSORS

Zach Schroder

zschrode@gmail.com



All funds raised by your student will be applied directly to his/her school account to offset activity expenses your student incurs. Students are not required to sell anything to make the make, nor participate in any fundraisers for the team. The goal is to help the student offset expenses for this school-sponsored activity.